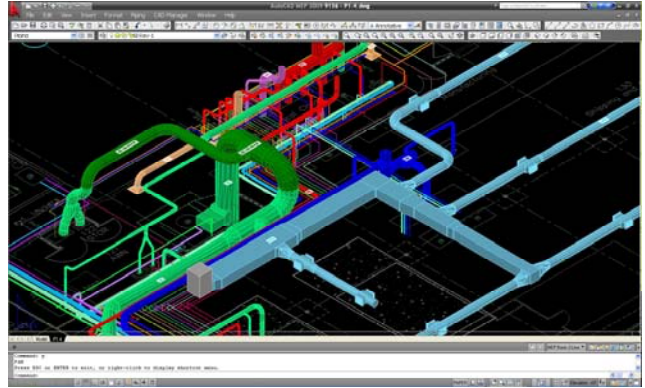


Top engineers focusing on Commissioning & Technical Consulting



**Sierra Solar Power
R&D
Fremont Facility Design**



Owner:



Completion Date: March 1, 2009

CTC Design's Role

Mechanical & Process Design Engineer & Team Leader

System Description

Sierra Solar Power is a solar panel manufacturing company using thin film process. The design included several process gas delivery systems, both hazardous and none, process cooling water system and several exhaust systems. The building is existing with a major renovation done by the project.

Team Leader Comment

CTC Design led the entire design team. The disciplines included: Architectural, Electrical, Gas Detection and Structural. For design coordination the mechanical and piping systems were drawn using 3-D. This resolved 80 - 90% of coordination issues. The most difficult part of the project was helping the process engineers define the tool utility requirements. The schedule was extremely aggressive; we had less than a month to produce the design. Looking back, we all enjoyed working on this project; the SSP team is a fun group to work with.

Project References:

References available upon request.

605 Nuttman Street, Santa Clara, CA 95054 Tel 408.551.0707 Fax 408.844.8923

www.ctc-design.com